

Integrated Landscape Management to Secure Nepal's Protected Areas and Critical Corridors (ILaM)

**Government of Nepal
and
World Wildlife Fund (WWF) - Global Environment Facility (GEF)**



Personal details

Name :
Nationality :
Phone :
Mobile :
Email :
Address :
Country :

Medical details

Blood Group :
Height :
Weight :
Body Mass Index :
Allergies :
Physician name :

Emergency Details

Name :
Relationship :
Residential Address :
Phone :
Mobile :

PROJECT INTRODUCTION

The WWF-GEF supported Integrated Landscape Management to Secure Nepal's Protected Areas and Critical Corridors (ILaM) Project has a geographic scope spanning the whole of the Terai Arc Landscape (TAL) in Nepal. The project will result in a reduction in the threats altering the biological corridors and Protected Areas (PA) buffer zones in the TAL, enhancing the ecological integrity

of these substantially forested areas, the globally significant wildlife populations, and the resilience of forest dwelling communities. The improved conservation and sustainable management of forest resources will result in increased carbon storage, sequestration and restoration of degraded habitats and continued delivery of ecosystem services that support local population.

OBJECTIVES

The project seeks to achieve the following objective: **to promote integrated landscape management to conserve globally significant forests and wildlife.**

Over the five-years project period, the project objective will be achieved through the implementation of four interconnected components:

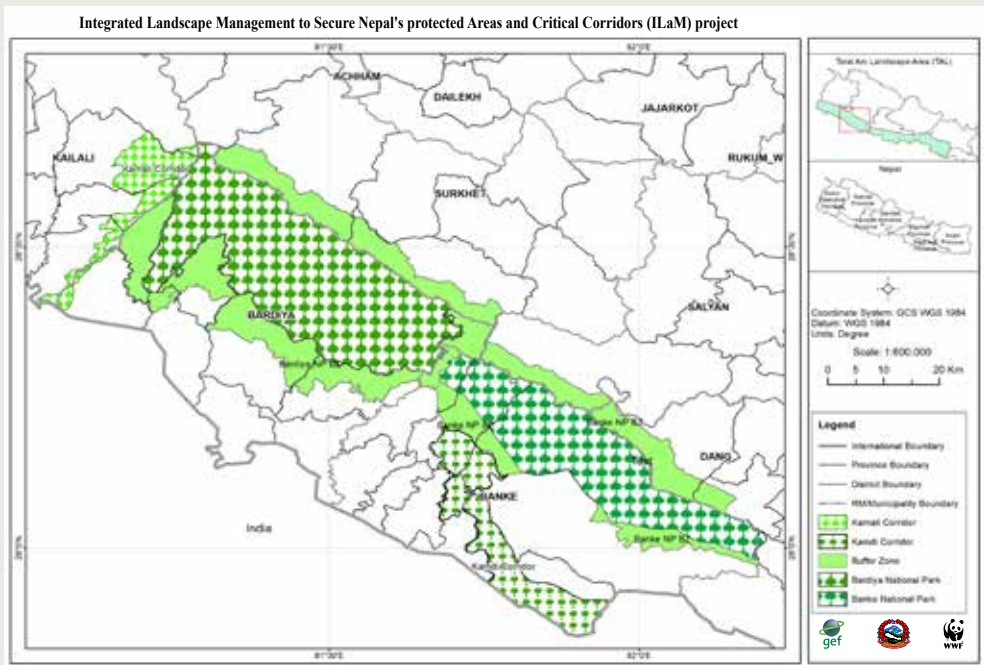
1. National capacity and enabling environment for cross-sectoral coordination to promote forest and landscape conservation: a national-level component to develop institutional and coordination capacity at all levels, to benefit planning and conservation of the overall Terai Arc Landscape (TAL).
Terai Arc Landscape – training and on ground implementation of sustainable forest and wildlife management activities in the targeted Banke-Bardia complex, support for community based natural resource management, mitigation of human wildlife conflict, and reducing the impacts of linear infrastructure on wildlife.
2. Integrated Planning for Protected Area Buffer Zones and Critical Corridors in the Terai Arc Landscape -support for improved planning for all seven corridors of the TAL and assessments to determine priority sites for intervention within a targeted sub-set of the landscape, the Banke-Bardia complex, including Kamdi and Karnali corridors.
3. Forest and human-wildlife conflict management for improved conservation of targeted protected area buffer zones and corridors in the
4. Knowledge Management and Monitoring and Evaluation - to bring practitioners together from across the landscape, help develop a coherent vision of integrated landscape management, share resources and lessons learned across all levels of intervention and prepare the way for replication and upscaling of project results.
The project will work toward the Sustainable Development Goals by promoting inclusive, coordinated land management, good governance, and

economic development to address the root causes of poverty and the universal need for development that works for all people. It will primarily target terrestrial biodiversity conservation (Goal 15 - Life on Land), but also contribute towards other Goals, including: 1 (No Poverty), 5

(Gender Equality), 13 (Climate Action), 11 (Sustainable Cities and Communities), 14 (Life Below Water) and 16 (Peace, Justice and Strong Institutions). Goal 15 - Life on Land will play an integral role in achieving all the others - and vice versa.

WORKING AREAS

Terai Arc Landscape (TAL) region



PROJECT STAKEHOLDERS

The project will work with different layers of Stakeholder:

- Ministry of Forests and Environment (MoFE)
- Department of Forests and Soil Conservation (DoFSC), Department of National Parks and Wildlife Conservation (DNPWC)
- State Governments (Ministry of Industry, Tourism, Forests and Environment)
- Local Governments (Rural Municipality, Municipality, Sub Metropolitan City)
- Division Forest Offices (DFO) and National Park Offices

- Buffer Zone User Committees (BZUCs), Buffer Zone Community Forest User Groups (BZCFUGs), Community Forest User Groups (CFUGs)
- Federation of Community Forest User Groups of Nepal (FECOFUN)
- Indigenous People Nepal Federation of Indigenous Nationalities (NEFIN)
- Relevant Community Based Organizations (CBOs)
- Conservation I/NGOs

GUIDELINES AND PROCEDURES

Working with all the layers of stakeholders, the project will strictly follow few guidelines and procedures:

Indigenous People

The project considers Indigenous people as the main inhabitants living around the PAs and in the Buffer zone and Corridors in the TAL. The project will be guided by the Indigenous People's Planning Framework (IPPF) - And Process Framework (PF) according to which, it safeguards the rights of IPs to participate and equitably receive culturally appropriate benefits from the project.

Environment and Social Safeguards Integrated Policies and Procedures

Environment and Social Safeguards Integrated Policies and Procedures is designed to provide the entire project with the procedures to minimize adverse environmental impacts, and to support the positive impacts to the possible maximum extent, abiding by human rights according to the prevailing government law and order.

Gender Equality and Social Inclusion (GESI)

The Ministry of Forests and Environment (MoFE) and World Wildlife Fund (WWF) is committed to mainstreaming Gender Equality and Social Inclusion (GESI), to ensure that women and men have equal

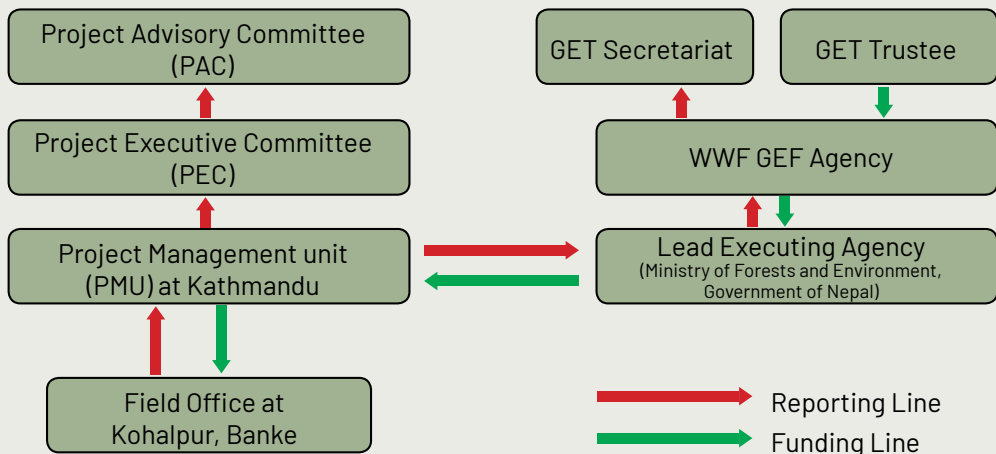
access to, and control over, resources for development, benefits, and decision-making at all stages of development processes, projects, programs, or policy. This will promote equitable management of benefits such as the use of natural resources among all citizens as described in the Constitution of Nepal to support GESI is fully mainstreamed.

Project Execution Arrangement

The WWF-GEF project, ***Integrated Landscape Management to Secure Nepal's Protected Areas and Critical Corridors Project (PIMS 9437) - ILaM*** will be executed by the Ministry of Forests and Environment (MOFE), Government of Nepal. Under MOFE, DOFSC and DNPWC are the major two departments, responsible for implementing the project's interventions. The local community groups (e.g., Community Forest User Groups, Buffer Zone User Committees, Buffer Zone Community Forest User Groups), municipalities and state government agencies (e.g., Ministry of Industry, Tourism, Forests and Environment, Division Forest Offices) will be key partners for the implementation at local and state level. MOFE will be responsible for communicating with the national GEF Operational Focal Point (OFP) regarding the status of

project implementation. WWF as the GEF implementing agency will communicate and coordinate with GEF secretariat as appropriate. The **Project Advisory Committee (PAC)** and **Project Executive Committee (PEC)** and **Project Management Unit (PMU)** will constitute the overall governing bodies for the project. The overall project execution arrangements are shown below. The key

function of PAC is strategic guidance and provide enabling/facilitation for effective implementation across all levels of the government structure. Likewise key function of PEC is linking PMU with PAC, endorsement of annual workplan/ progress/financial report, and facilitate coordination at all levels(federal, state, and local).



PROJECT ADVISORY COMMITTEE (PAC)

Chair : Secretary, MoFE

Member Secretary : Chief, Planning, Monitoring and Coordination Division, MoFE

Members:

1. Director General, DoFSC
2. Director General, DNPWC
3. Chief, Planning, Monitoring and Coordination Division, MoFE
4. Chief, Climate Change Management Division, MoFE
5. Chief, Forest and Watershed Division, MoFE
6. Chief, Participatory Forestry Division, MoFE
7. Chief, Environment and Biodiversity Division, MoFE
8. Chief, National REDD Centre
9. Joint Secretary, International Cooperation Coordination Division, Ministry of Finance
10. Joint Secretary, MoAD
11. Joint Secretary, MoHA
12. Joint Secretary, MoFAGA
13. Representative of SWC
14. State Secretary of MoITF, Madhesh State
15. State Secretary of MoITFE, Bagmati state
16. State Secretary of MoFESC, Gandaki state
17. State Secretary of MoFESC, Lumbini state

- | | |
|--|---|
| 18. State Secretary of MoITFE, Karnali State | (IP) and Local communities |
| 19. State Secretary of MoITFE, Sudur Paschim state | 21. Representative, FECOFUN |
| 20. Representative, Indigenous People | 22. Country Representative, WWF Nepal (invitee) |

Function, Roles and Responsibilities:

- Strategic guidance and coordination in line with the Project Document/Grant Agreement
- Enabling and facilitation for effective implementation across all levels of the government

PROJECT EXECUTIVE COMMITTEE (PEC)

Chair : Joint Secretary, Planning, Monitoring and Coordination Division, MoFE (Project Director)

Member Secretary : Project Coordinator, ILaM

Members:

- | | |
|--|---|
| 1. Under Secretary, Development Cooperation Coordination Section, MoFE | 7. Under Secretary, Department National Park, and Wildlife Conservation |
| 2. Under Secretary, Program and planning section, MoFE | 8. Under Secretary, Department of Forests and Soil Conservation |
| 3. Under Secretary, Climate Change and Management Division, MoFE | 9. Under Secretary, National REDD Centre |
| 4. Under Secretary, Forests and Watershed Division, MoFE | 10. Under Secretary, MOFAGA |
| 5. Under Secretary, Participatory Forestry Division, MoFE | 11. GESI Focal point, MoFE |
| 6. Under Secretary, Environment and | 12. Under Secretary, Finance section, MoFE |

Invitees:

- Project Manager, Field Manager(s) and
- Representative, WWF

Function, Roles and Responsibilities:

- Review and endorsement of AWP and Progress and Financial report (Yearly and Half yearly)
- Endorsement of project governance policy
- Support in facilitation of co-financing and annual audit report response
- Linking the project function with Advisory committee
- High level monitoring at outcome level
- Facilitate coordination with three levels of governments (Federal, state, and local)

FIELD COORDINATION COMMITTEE (FCC)

Coordinator:

- Secretary, Ministry of Forest, Environment and Soil Conservation, Lumbini Province

Members:

1. State Forestry Director
2. TAL Manager/s
3. Chief Warden, BaNP
4. Divisional Forest Officer, Division Forest Office, Banke
5. Field Manager, ILaM

Invitees:

- As required.

Key Function, Roles and Responsibilities:

- Avoid duplications during plan and implementation.
- Local level implementation, coordination, and facilitation
- Reports directly to PEC.

EXPECTED RESULTS.

- 4,050 Ha Area of degraded lands restored (Agricultural lands-150 Ha, Forest, and Forest land-2,900 Ha, Natural grass and shrublands-1,000 Ha),
- 130 CFUGs in Kamdi and Karnali corridor with updated forest operational plans addressing SFM and biodiversity conservation,
- Greenhouse gas emissions mitigated (metric tons of carbon dioxide equivalent) tCO₂e - 1,270,919,
- 31,356 direct beneficiaries as co-benefit of GEF investment- [Community members in targeted CFUGs and BZUGs in intervention areas receiving capacity development/training-29,740 (50% female), Government (federal/state/local) staff receiving capacity development/training from the project, - 1,616 (30% female)].

MAJOR ACTIVITIES

Sustainable Forest Management

- Support for private forest development
- Support multi-year nursery development
- Forest fire management through innovative tools and techniques
- Improve Livestock Management - Integrated grazing management (feeding trough construction support, fodder plant support, vet support, stall improvement)
- Riverbank Protection
- Support for revision of community forest operational plan (CFOP)
- Capacity development programs to government officials
- Capacity development programs to CFUGs/BZUGs (training on sustainable forest management, restoration technique, governance and financial management, exchange visits on HWC management)
- Provide financial and technical support to small scale green enterprises and develop business plans

Wildlife Management

- Study and research related to biodiversity (species specific guidelines for HWC management, wildlife traffic accident issue)
- Install tools/facilities to pilot measures to reduce wildlife accidents in highways.
- Wildlife rescue center establishment
- Support wildlife rescue and handling equipment and training
- Habitat (wetland and grassland) management
- Capacity building program and field gear support to CBAPU
- Revolving fund establishment support

GESI and Safeguard

- Capacity development programs on GESI and Safeguard (Training, Consultation meetings, orientation)
- Support in Free Prior Informed Consent (FPIC) process
- Safeguard Plan Implementation
- Periodic Safeguard Monitoring Visits
- Empowerment of women, indigenous people, local communities, and marginalized groups in Community Based Natural Resources Management

Cross-sectoral Coordination, Integrated Awareness

- Improvement of federal, state, and local level coordination mechanisms
- Capacity development for federal and state stakeholders to enhance their understanding of integrated landscape approach
- Innovation grant to government agencies and CBOs/CSOs/academic institutions, and thesis grant to bachelor's and master's student
- Eco- Club formation support for awareness promotion on forest and wildlife management
- Organize dialogue through "Jaibik chautari"/biodiversity platform at field

to initiate green enterprises for CBAPU members.

- Establish community-based insurance (crop, livestock) scheme.
- Human Wildlife Conflict Mitigation measures support (Predator proof coral pen, mentha plantation, mesh wire/biological/virtual fencing)
- Capacity development programs to government officials
- Establishment of community based Human Wildlife Conflict (HWC) reporting system.
- Support transboundary coordination at local level

(CBNRM)

- Prepare corridor/ bottleneck assessment report with GESI integration.
- Support CFUGs and BZ CFUGs to develop/revise forest operational plan (GESI aspect is revised/incorporated)
- Develop a gender and inclusion responsive guideline (GIRD) to prepare management plans of PF/corridors

Planning, Stakeholders Engagement and Awareness

level.

- Mass awareness on ILaM approach through radio program/ Print/TV/ Video
- Biodiversity and socio-economic assessment of biological corridors, resource mapping of CFUGs at corridor level and BZUCs
- Support to develop state forest sector strategies and protected forest (PF)/corridor management plans
- Support to establish Forest Management Information System (FMIS) and forest fire reporting system

Date:

Date:

Date:

Date:

Contact for Further Information

Project Managemet Unit

Forestry Complex,
Babarmahal Kathmandu, Nepal
Telephone: +977-1-5905144
Email: info.ilam@mofe.gov.np
Website: www.ilam.mofe.gov.np

Project Field Office

Kohalpur, Banke,
Lumbini Province, Nepal
Email: info.ilam@mofe.gov.np
Telephone: +977-081-534239